

# 03 Mini-6KC/6KS/6KT and Mini-6K/7K/10K Mini Centrifuge

## Features

1. Composite shell, shatter-resistant
2. The electronic braking system for rapid sample processing
3. Quick release rotor tub, allows for easy rotor exchange
4. Mini-6KC / Mini-6KS / Mini-6KT  
Two speed options: 4,000 & 6,000rpm
5. Mini-6KC include 2 quick release interchangeable rotors  
--8x1.5/2.0ml tube rotor, --4 place PCR Strip rotor
6. Mini-6KS: 3-in-1 rotor design, high capacity and time-saving  
--6x1.5/2.0ml tubes, --6x0.5ml tubes, --2-8x0.2ml PCR strip tubes
7. Mini-6KT: Patented rotor design for 48-well 50ul PCR plate  
Optional rotor: 4x5ml Eppendorf tube



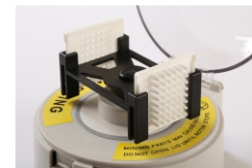
Mini-6KC



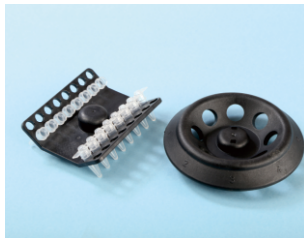
Mini-6KS  
Patented 3-in-1 rotor design



Mini-6KT



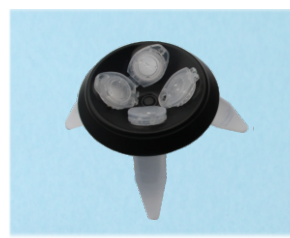
05  
Mini-6KT 48-well 50ul PCR  
plate rotor



01  
Mini-6KC quick release  
rotor



02  
Mini-6KS 3-in-1 rotor



03  
Mini-6KT 4x5ml tube  
rotor



04  
Mini-6KC/Mini-6KS/Mini-6KT  
Two speed options



Mini-6K / Mini-7K / Mini-10K

### Specification

Model	Mini-6K	Mini-7K	Mini-10K	Mini-6KC	Mini-6KS	Mini-6KT
Rotor	6×1.5ml/2.0ml rotor 2×8×0.2ml strip rotor	6×1.5ml/2.0ml rotor 2×8×0.2ml strip rotor	6×1.5ml/2.0ml rotor	8×1.5ml/2.0ml rotor 4×8×0.2ml strip rotor	3-in-1 rotor (*)	48-well 50ul PCR rotor or 5×5ml tube rotor
Speed	6,000rpm	7,000rpm	10,000rpm	4,000 & 6,000rpm	4,000 & 6,000rpm	4,000 & 6,000rpm
Max.RCF	2,000 x g	2,300 x g	5,000 x g	1,200 & 2,000 x g	1,200 & 2,000 x g	1,200 & 2,000 x g
Dimensions	175x148x118mm	175x148x118mm	175x148x118mm	135x147x120mm	135x127x120mm	135x147x120mm
Weight	0.7kg	0.7kg	0.7kg	0.7kg	0.7kg	0.7kg
Power	AC100-240V	AC100-240V	AC100-240V	AC100-240V	AC100-240V	AC100-240V

\*3-in-rotor ---- 6x1.5/2.0ml, 6x0.5ml tubes and 2-8x0.2ml PCR strip rotor

### Ordering information

No.	Code	Description
01	AS-08060-00	Mini-6K, AC100-240V, 50/60Hz
02	AS-08070-00	Mini-7K, AC100-240V, 50/60Hz
03	AS-08080-00	Mini-10K, AC100-240V, 50/60Hz
04	AS-08020-00	Mini-6KC, AC100-240V, 50/60Hz
05	AS-08030-00	Mini-6KS, AC100-240V, 50/60Hz
06	AS-08100-00	Mini-6KT, AC100-240V, 50/60Hz

### Accessories

Mini-6K/Mini-7K/Mini-10K		Mini-6KC		Mini-6KS	
AS-08061-01	Allen wrench	AS-08021-01	8 x 1.5/2.0ml rotor	AS-08031-01	6x1.5/2.0ml, 6x0.5ml tubes & 2-8x0.2ml PCR Strip rotor
AS-08061-02	6 x 1.5/2.0ml rotor	AS-08021-02	4 x 8 x 0.2ml strip rotor		
AS-08061-03	2 x 8 x 0.2ml strip rotor	AS-08061-05	Adapters for 0.5/0.6ml tubes	Mini-6KT	
AS-08061-04	Slide rotor	AS-08061-06	Adapters for 0.2ml tubes	AS-08101-01	48 well 50ul PCR plate rotor
AS-08061-05	Adapters for 0.5/0.6ml tubes			AS-08101-02	4x5ml tubes rotor
AS-08061-06	Adapters for 0.2ml tubes			AS-08101-03	Adapter for 5ml normal tubes