



Storage that meets the highest requirements



Digital temperature display



Temperature alarm



Effective fan forced cooling



Temperature stability



Automatic defrost system

SNAIGÉ
M E D I C A L

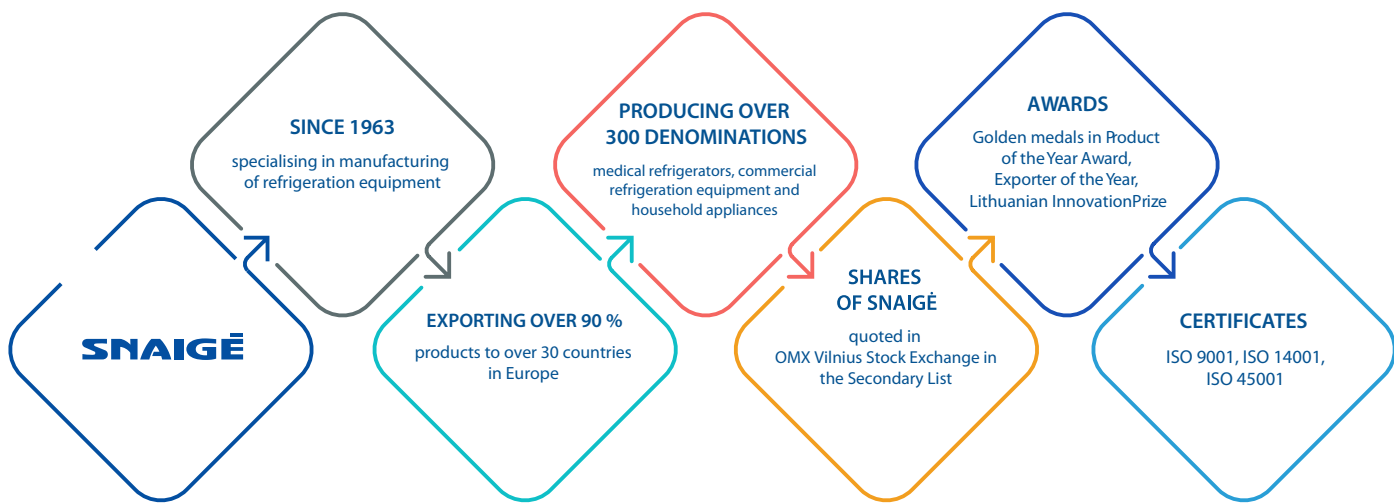
PHARMACEUTICAL REFRIGERATORS

WHO WE ARE?

SNAIGĖ AB is the international manufacturer of household and professional refrigeration equipment operating in Lithuania. We can truly be called the frost experts because we have been creating and producing in this industry since 1963. We are happy that the doors of our refrigerators are opened daily by thousands of people in over 30 countries in Europe, Asia and Africa. We produce cutting-edge, modern, easy-to-use, devices that are safe and cost-efficient, as well as trendy and functional. We are proud to know that our customers appreciate the quality of our products. This stimulates us to continue designing new products, offering more userfriendly functions and surprising with the design solutions.



FACTS AND FIGURES



SNAIGĖ is an international manufacturer of household, commercial and professional refrigeration equipment operating in the EU with a base in Lithuania. Our professional refrigeration solutions are outstanding in terms of their quality, with excellent value for money, a low environmental impact and effective energy consumption.

EUROPEAN QUALITY

SNAIGĖ refrigerating equipment ensures excellent quality, not just because of our long-term experience, modern technologies and advanced production methods, but also due to the importance we place on the components of our refrigerating appliances. We strictly use only materials and parts from the very best, well-known global production companies that meet the latest European Union standards and requirements. Maintaining the highest-quality SNAIGĖ production is always our main focus.



ECO FRIENDLY

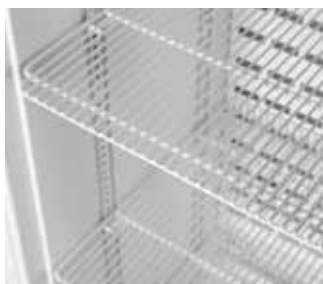
SNAIGĖ medical refrigeration equipment uses environmentally friendly refrigerant R600. We consistently comply with the Kyoto Protocol requirements on global warming and climate change. Therefore, we use only non-hazardous materials that will not deplete the ozone and do not promote the greenhouse effect. We choose resource-efficient materials and production methods, such as electricity from renewable energy sources are used in the refrigerator manufacturing process. Moreover, nearly all the materials used in our production lines are recyclable.



FAST & FLEXIBLE

Our efficient and flexible production process ensures the quick fulfilment of our customers' orders. A favourable geographical location allows fast deliveries to any European country. We will also adapt our products according to the customer's needs, as well as the branding.





MD40DD-P301BEQ



MD40DD-P600BEQ



KEY FEATURES

- Comply with DIN 13277
- Electronic control system
- Touch LED display
- Temperature recording and transfer via Bluetooth (mobile APPs)
- Emergency power supply to the controller
- Protection against low temperature
- Effective fan forced cooling
- Protection against contact with a cold surface
- Access to an additional external sensor
- Self-closing door. Changeable direction of the door opening
- Vertical LED lighting
- Door lock
- Calibration block

ELECTRONICAL CONTROLLER MAIN FUNCTIONS

- Temperature recording and alarm recording functions;
- Data transfer via Bluetooth (mobile APPs);
- Emergency 24-hour power supply and alarm function;
- Min/Max temperature display on the screen;
- Alarm indicator after temperature changes. Stays visible until removed manually;
- +2 °C temperature limit
- Possibility to connect an external alarm system;
- Possibility to connect to external temperature and other parameters monitoring system (purchased separately);

OPTIONAL FEATURES

- Additional wire shelf
- Perforated metallic shelves
- Organizers
- Branding

	MD40DD-P301BEQ	MD40DD-P600BEQ
Min/max ambient temperature for which the refrigerating appliance is suitable	+10 / +35 °C	+10 / +35 °C
Min/max average temperature limits of products	+ 2 / +8 °C	+ 2 / +8 °C
Fixed temperature setting	+5 °C	+5 °C
Gradient	2,9 °C	2,9 °C
Fluctuation	0,5 °C	0,5 °C
Increase in temperature from +5 °C to +10 °C (empty, +25 °C TU)	40 min.	40 min.
Decrease in temperature from +25 °C to +5 °C (empty, +25 °C TU)	40 min.	40 min.
Gross capacity	385 l	385 l
Net capacity	290 l	290 l
Noise level	44 dB (A)	44 dB (A)
Safety thermostat to avoid temperature below +2 °C	Yes	Yes
Optical and acoustical temperature alarm	Yes	Yes
External dimensions (H x W x D)	2025 x 600 x 620 mm	2025 x 600 x 620 mm
Internal dimensions (H x W x D)	1645 x 500 x 418 mm	1645 x 500 x 418 mm
Annual energy consumption	467 kWh / a	348 kWh / a
Number of shelves	5 adjustable + 1 bottom	5 adjustable + 1 bottom
Shelf size (W x D)	380 x 495, bottom 445 x 180 mm	380 x 495, bottom 445 x 180 mm
Maximum load per shelf	40 kg	40 kg

MD35DD *MAX PLUS line*



KEY FEATURES

- Comply with DIN 13277
- Electronic control system
- Touch LED display
- Temperature recording and transfer via Bluetooth (mobile APPs)
- Emergency power supply to the controller
- Protection against low temperature
- Effective fan forced cooling
- Protection against contact with a cold surface
- Access to an additional external sensor
- Changeable direction of the door opening
- Ceiling LED lighting
- Door lock
- Calibration block

ELECTRONICAL CONTROLLER MAIN FUNCTIONS

- Temperature recording and alarm recording functions;
- Data transfer via Bluetooth (mobile APPs)
- Emergency 24-hour power supply and alarm function;
- Min/Max temperature display on the screen;
- Alarm indicator after temperature changes. Stays visible until removed manually;
- +2 °C temperature limit
- Possibility to connect an external alarm system;
- Possibility to connect to external temperature and other parameters monitoring system (purchased separately);

OPTIONAL FEATURES

- Additional wire shelf
- Branding

MD35DD-P301DDQ



MD35DD-P600QDQ



	MD35DD-P301DDQ	MD35DD-P600QDQ
Min/max ambient temperature for which the refrigerating appliance is suitable	+10 / +35 °C	+10 / +35 °C
Min/max average temperature limits of products	+2 / +8 °C	+2 / +8 °C
Fixed temperature setting	+5 °C	+5 °C
Gradient	2,9 °C	2,9 °C
Fluctuation	0,5 °C	0,5 °C
Increase in temperature from +5 °C to +10 °C (empty, +25 °C TU)	40 min.	40 min.
Decrease in temperature from +25 °C to +5 °C (empty, +25 °C TU)	40 min.	40 min.
Gross capacity	350 l	350 l
Net capacity	230 l	230 l
Noise level	50 dB (A)	50 dB (A)
Safety thermostat to avoid temperature below +2 °C	Yes	Yes
Optical and acoustical temperature alarm	Yes	Yes
External dimensions (H x W x D)	1810 x 600 x 620 mm	1810 x 600 x 620 mm
Internal dimensions (H x W x D)	1518 x 502 x 453 mm	1518 x 502 x 453 mm
Annual energy consumption	648 kWh / a	648 kWh / a
Number of shelves	5 adjustable + 1 bottom	5 adjustable + 1 bottom
Shelf size (W x D)	523 x 351, bottom 445 x 180 mm	523 x 351, bottom 445 x 180 mm
Maximum load per shelf	40 kg	40 kg



MD14DD-P301QX2

MD14DD-P600QX2



KEY FEATURES

- Comply with DIN 13277
- Electronic control system
- Touch LED display
- Temperature recording and transfer via Bluetooth (mobile APPs)
- Emergency power supply to the controller
- Protection against low temperature
- Effective fan forced cooling
- Protection against contact with a cold surface
- Access to an additional external sensor
- Self-closing door. Changeable direction of the door opening
- Ceiling LED lighting
- Door lock
- Calibration block

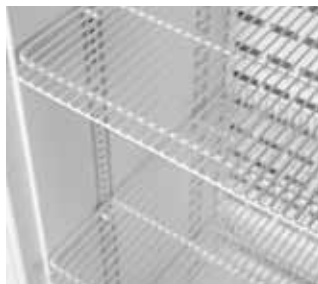
ELECTRONICAL CONTROLLER MAIN FUNCTIONS

- Temperature recording and alarm recording functions;
- Data transfer via Bluetooth (mobile APPs)
- Emergency 24-hour power supply and alarm function;
- Min/Max temperature display on the screen;
- Alarm indicator after temperature changes. Stays visible until removed manually;
- +2 °C temperature limit
- Possibility to connect an external alarm system;
- Possibility to connect to external temperature and other parameters monitoring system (purchased separately);

OPTIONAL FEATURES

- Additional wire shelf
- Perforated metallic shelves
- Branding

	MD14DD-P301QX2	MD14DD-P600QX2
Min/max ambient temperature for which the refrigerating appliance is suitable	+10 / +35 °C	+10 / +35 °C
Min/max average temperature limits of products	+2 / +8 °C	+2 / +8 °C
Fixed temperature setting	+5 °C	+5 °C
Gradient	2,9 °C	1,8 °C
Fluctuation	0,5 °C	0,5 °C
Increase in temperature from +5 °C to +10 °C (empty, +25 °C TU)	40 min.	40 min.
Decrease in temperature from +25 °C to +5 °C (empty, +25 °C TU)	40 min.	40 min.
Gross capacity	130 l	130 l
Net capacity	100 l	100 l
Noise level	42 dB (A)	42 dB (A)
Safety thermostat to avoid temperature below +2 °C	Yes	Yes
Optical and acoustical temperature alarm	Yes	Yes
External dimensions (H x W x D)	870 x 560 x 620 mm	870 x 560 x 620 mm
Internal dimensions (H x W x D)	725 x 465 x 392 mm	725 x 465 x 392 mm
Annual energy consumption	274 kWh / a	176 kWh / a
Number of shelves	2 adjustable + 2 bottom	2 adjustable + 2 bottom
Shelf size (W x D)	420 x 324, bottom: 465 x 263 and 445 x 180 mm	420 x 324, bottom: 465 x 263 and 445 x 180 mm
Maximum load per shelf	20 kg	20 kg



KEY FEATURES

- **Certified DIN 13277**
- Electronic control system
- Temperature recording and transfer via USB
- Data transmission via RS485 network
- Emergency power supply to the controller
- Protection against low temperature
- Effective fan forced cooling
- Protection against contact with a cold surface
- Access to an additional external sensor
- Self-closing door. Changeable direction of the door opening
- Ceiling LED lighting
- Door lock
- Calibration block

ELECTRONICAL CONTROLLER MAIN FUNCTIONS

- Temperature recording and alarm recording functions;
- Transfer of saved data to a USB storage device;
- Emergency 12-hour power supply and alarm function;
- +2 °C temperature limit
- Possibility to connect an external alarm system;
- Possibility to connect to external temperature and other parameters monitoring system (purchased separately);

OPTIONAL FEATURES

- Additional wire shelf
- Perforated metallic shelves
- Branding

MD40DD-P301SEQ



MD40DD-P600SEQ



	MD40DD-P301SEQ	MD40DD-P600SEQ
Min/max ambient temperature for which the refrigerating appliance is suitable	+10 / +35 °C	+10 / +35 °C
Min/max average temperature limits of products	+2 / +8 °C	+2 / +8 °C
Fixed temperature setting	+5 °C	+5 °C
Gradient	2,9 °C	2,9 °C
Fluctuation	0,5 °C	0,5 °C
Increase in temperature from +5 °C to +10 °C (empty, +25 °C TU)	40 min.	40 min.
Decrease in temperature from +25 °C to +5 °C (empty, +25 °C TU)	40 min.	40 min.
Gross capacity	385 l	385 l
Net capacity	290 l	290 l
Noise level	50 dB (A)	50 dB (A)
Safety thermostat to avoid temperature below +2 °C	Yes	Yes
Optical and acoustical temperature alarm	Yes	Yes
External dimensions (H x W x D)	2025 x 600 x 620 mm	2025 x 600 x 620 mm
Internal dimensions (H x W x D)	1645 x 500 x 418 mm	1645 x 500 x 418 mm
Annual energy consumption	695 kWh / a	525 kWh / a
Number of shelves	5 adjustable + 1 bottom	5 adjustable + 1 bottom
Shelf size (W x D)	380 x 495, bottom 445 x 180 mm	380 x 495, bottom 445 x 180 mm
Maximum load per shelf	40 kg	40 kg



MD40DC-P301BEQ



MD40DC-P600BEQ

KEY FEATURES

- Comply with DIN 13277
- Electronic control system
- Effective fan forced cooling
- Protection against contact with a cold surface
- Access to an additional external sensor
- Self-closing door. Changeable direction of the door opening
- Vertical LED lighting
- Door lock

ELECTRONICAL CONTROLLER MAIN FUNCTIONS

- Optical and acoustical temperature alarm

OPTIONAL FEATURES

- Additional wire shelf
- Perforated metallic shelves
- Branding

	MD40DC-P301BEQ	MD40DC-P600BEQ
Min/max ambient temperature for which the refrigerating appliance is suitable	+10 / +35 °C	+10 / +35 °C
Min/max average temperature limits of products	+2 / +8 °C	+2 / +8 °C
Fixed temperature setting	+5 °C	+5 °C
Gradient	2,9 °C	2,9 °C
Fluctuation	0,5 °C	0,5 °C
Increase in temperature from +5 °C to +10 °C (empty, +25 °C TU)	40 min.	40 min.
Decrease in temperature from +25 °C to +5 °C (empty, +25 °C TU)	40 min.	40 min.
Gross capacity	385 l	385 l
Net capacity	290 l	290 l
Noise level	44 dB (A)	44 dB (A)
Safety thermostat to avoid temperature below +2 °C	No	No
Optical and acoustical temperature alarm	No	No
External dimensions (H x W x D)	2025 x 600 x 620 mm	2025 x 600 x 620 mm
Internal dimensions (H x W x D)	1645 x 500 x 418 mm	1645 x 500 x 418 mm
Annual energy consumption	467 kWh / a	348 kWh / a
Number of shelves	5 adjustable + 1 bottom	5 adjustable + 1 bottom
Shelf size (W x D)	380 x 495, bottom 445 x 180 mm	380 x 495, bottom 445 x 180 mm
Maximum load per shelf	40 kg	40 kg



KEY FEATURES

- Comply with DIN 13277
- Electronic control system
- Effective fan forced cooling
- Protection against contact with a cold surface
- Access to an additional external sensor
- Self-closing door. Changeable direction of the door opening
- Ceiling LED lighting
- Door lock

ELECTRONICAL CONTROLLER

MAIN FUNCTIONS

- Optical and acoustical temperature alarm

OPTIONAL FEATURES

- Additional wire shelf
- Perforated metallic shelves
- Branding

MD14DC-P301QX2



MD14DC-P600QX2



	MD14DC-P301QX2	MD14DC-P600QX2
Min/max ambient temperature for which the refrigerating appliance is suitable	+10 / +35 °C	+10 / +35 °C
Min/max average temperature limits of products	+2 / +8 °C	+2 / +8 °C
Fixed temperature setting	+5 °C	+5 °C
Gradient	2,9 °C	1,8 °C
Fluctuation	0,5 °C	0,5 °C
Increase in temperature from +5 °C to +10 °C (empty, +25 °C TU)	40 min.	40 min.
Decrease in temperature from +25 °C to +5 °C (empty, +25 °C TU)	40 min.	40 min.
Gross capacity	130 l	130 l
Net capacity	100 l	100 l
Noise level	42 dB (A)	42 dB (A)
Safety thermostat to avoid temperature below +2 °C	No	No
Optical and acoustical temperature alarm	No	No
External dimensions (H x W x D)	870 x 560 x 620 mm	870 x 560 x 620 mm
Internal dimensions (H x W x D)	725 x 465 x 392 mm	725 x 465 x 392 mm
Annual energy consumption	274 kWh / a	176 kWh / a
Number of shelves	2 adjustable + 2 bottom	2 adjustable + 2 bottom
Shelf size (W x D)	420 x 324, bottom: 465 x 263, 445 x 180 mm	420 x 324, bottom: 465 x 263, 445 x 180 mm
Maximum load per shelf	20 kg	20 kg

SNAIGĖ

M E D I C A L

Snaigė AB
Pramonės str. 6
LT – 62175 Alytus, Lithuania
Phone (+370 315) 56 206
Mob. 370 656 35923
E-mail snaige@snaige.lt
www.snaigeprofessional.lt