

Specifications

| | |
|----------------------------------|---|
| Model | CR 30NX |
| Maximum speed | 30,000rpm (R30AT angle rotor) |
| Maximum RCF | by swing rotor:118,000Xg (R25ST2),by angle rotor:110,000Xg (R30AT) |
| Max. Nominal Capacity | 6L: R7A rotor (6 X 1,000mL) or R9A2 rotor (4 X 1,500mL) |
| Speed Control Range | 300rpm to 30,000rpm(+) |
| Temperature setting range | -20°C to +40°C |
| Temperature Accuracy | ± 2°C (**) |
| Acceleration / Deceleration mode | Accel 11 modes, Decel 10 modes with 2 modes variable deceleration slope |
| Program Function | 1,000 programs |
| Drive unit | Induction Motor (Inverter) |
| Refrigerator | Rotary Inverter Driven Compressor (Refrigerant: R410A) |
| Interface | USB X 1, LAN X 1 |
| Display | High-resolution 6.5 inch color LCD |
| Keypad | Touch sensitive LCD panel with GUI icons |
| Safety devices | Door interlock, dual-overspeed detector, imbalance detector, rotor cover detector, over-temperature detector |
| Noise Level | Less than 56(dBA) |
| Applicable standard | CE, cCSAus(***) |
| 1) EMC Directive | EN61326-1 |
| 2) Product safety | EN61010-1, EN61010-2-020 UL Std. No. 61010-1, UL Std. No. 61010-2-020 (***) CAN/CSA-C22.2 No. 61010-1, CAN/CSA-C22.2 No.61010-2-020 (***) |
| Power Requirement | Single Phase, AC200/208/220/230/240V +/-10%, 50/60Hz, 30A Three-phase four-wire: AC 220/230/240V +/-10%, 50/60Hz, 16A |
| Heat Output | Less than 1.2 kW(****) |
| Dimension | 708mm(W) x 892mm(D) x 866mm(H) (height to table : 865mm) |
| Weight | 310Kg |

Note

* R9A2 rotor's minimum rotation speed setting is 2,000 rpm.

** Temperature calibration may be required depending on users' operating conditions and operating environments.

*** For Canada and United States, only.

**** When R30AT rotor runs at 30,000 rpm



CAUTION:

For safe and proper use of your machine, carefully read and follow the instructions in the instruction manual.

Notices:

- All specifications are subject to change without advance notice.
- Actual color may vary from the color of the photos in this catalogue, due to printing conditions.
- Due to safety reasons, installation environments, operating environments and conditions may be restricted.
- Unless specifically mentioned, products and/or operation panel of the photos are standard specification.
- For further information, please contact our sales representative.

Manufacturer :

Koki Holdings Co., Ltd.

Life-Science Instruments Division
15-1, Konan 2-chome, Minato-ku, Tokyo
108-6020, Japan
TEL : +81-(0)3-6738-0863
FAX : +81-(0)3-6738-0861
URL : <https://www.himac-science.com>

KHLiM-001A | 2018.07

himac

himac centrifuges open a new chapter

High-speed Refrigerated Centrifuge

CR 30NX



Koki Holdings Co., Ltd.

Life Science Instruments Div.

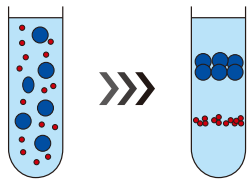
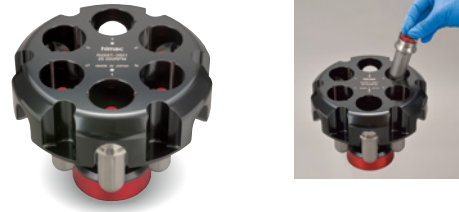
*Hitachi Koki Co., Ltd. changed its corporate name to Koki Holdings Co., Ltd., on June 1, 2018

Features

100,000Xg swing rotors

Do you need an ultracentrifuge, because you need 100,000Xg for a swing rotor centrifugation?

With 100,000Xg swing rotor centrifugation, CR30NX and top loading swing rotor R25ST or R25ST2 supports your Rate zonal centrifugation or Isopycnic centrifugation.



Isopycnic centrifugation

100,000Xg angle rotor

Or with 100,000Xg angle rotor centrifugation, CR30NX supports your cell fractionation.



6L rotors

And, in CR30NX, two types of 6L rotors are available; R7A (6x 1L bottle) and R9A2 (4 x 1.5L bottle).



New Line-up rotors for CR30NX

| Type | Model | Max.Speed (rpm) | Max.RCF (Xg) | Nominal Capacity | Separation examples |
|-----------------|--|-----------------|-------------------------------|--|--|
| Swinging Bucket | R25ST <small>Easy setting "Top Loading System"</small> | 25,000 | 110,000 | 6x40mL (for round bottom tubes) Largest Volume Rate Zonal Centrifugation | <ul style="list-style-type: none"> Virus and Viral particle by Pelleting Exosome by Pelleting or by Density gradient centrifugation Protein by Pelleting or by Density gradient centrifugation Organelle (Microsome) by Pelleting |
| | R25ST2 | 25,000 | 118,000 | 6x16mL (for round bottom tubes) | |
| Fixed Angle | R30AT | 30,000 | 110,000 | 8x50mL (for round bottom tubes/ bottles) | <ul style="list-style-type: none"> Virus and Viral particle by Pelleting Exosome by Pelleting or by Density gradient centrifugation Protein by Pelleting or by Density gradient centrifugation Organelle (chloroplast, mitochondria etc.) by Pelleting |
| Fixed Angle | R19A2 <small>Rapid separation with himac TC tubes!</small> | 19,000 | 50,000 *with himac TC tube | 8x50mL (for conical tubes) | <ul style="list-style-type: none"> Virus and Viral particle by Pelleting Organelle (chloroplast, mitochondria etc.) by Pelleting DNA, RNA by Pelleting |
| | R16A2 | 16,000 | 36,100 *with himac TC tube | 10x50mL 10x15mL (for conical tubes) | <ul style="list-style-type: none"> Organelle (chloroplast, mitochondria etc.) by Pelleting DNA, RNA by Pelleting |
| | R16A3 | 16,000 | 40,100 | 6x250mL | <ul style="list-style-type: none"> Bacteria by Pelleting |

*Other rotors such as for microtubes or for microplates are also available. Please contact your nearest sales representative.

** About the use of conventional high-speed rotors with CR30NX, contact your nearest sales representative.

High-end Technologies

All rotors maintained at 4°C at maximum rotor speed.

Powerful refrigeration system with appropriate vacuum control

Low-noise

With the latest noise reduction system, the operating sound level is 56dB; the quietest in this class high-speed refrigerated centrifuges, as of June 2018.

New rotor ID detection and self-locking rotor system

Rotor model and its maximum speed are automatically identified just the rotor is placed on the drive shaft.

In addition, rotor system is self-locking and no need install the rotor by screw, same as existing himac high-speed centrifuges.

Dual sensor System for safe and secure operations:

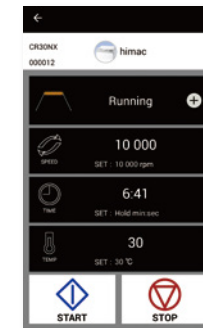
1. rotor speed
2. rotor temperature
3. rotor ID
4. vacuum level

MFRS : Mist filter refresh system

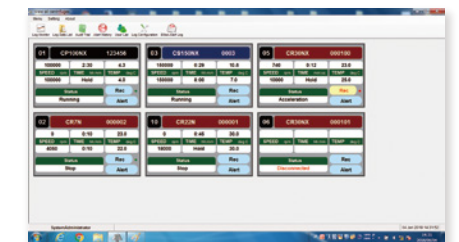
Rotating the filter regularly by the motor, oil is removed from the filter and returned to the vacuum pump.

Useful functions

Data communication system



1) Remote operation and monitoring: "himac View" with your iPhone or Android phone.



2) Optional log management software himac LogManager (Digital signature, audit trail, and encrypted data files, etc. are available.)

Door lock with Door Open Passcode



*Patent Pending

Door opener foot switch (option)



Rotor cover detection sensor with alert function



Rotor cover detection sensor prevents rotors from spinning without rotor covers.

Multilingual Display (10 Languages)



- English
- German
- French
- Spanish
- Italian
- Portuguese
- Russian
- Chinese (simplified)
- Korean
- Japanese

Power-saving mode (auto stand-by), User Administration with User Lockout, etc. are also available.